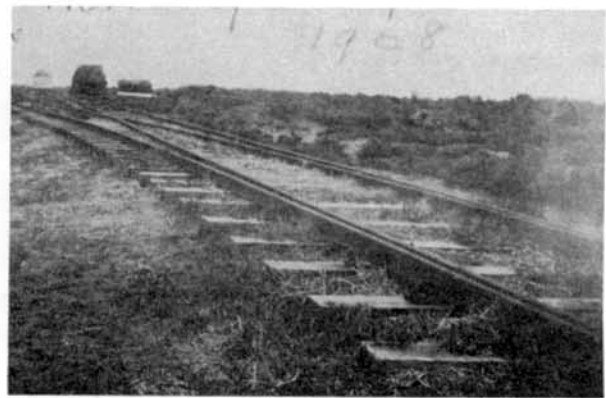
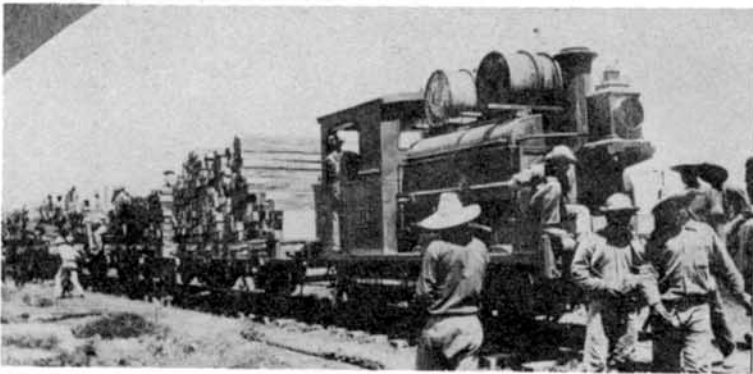
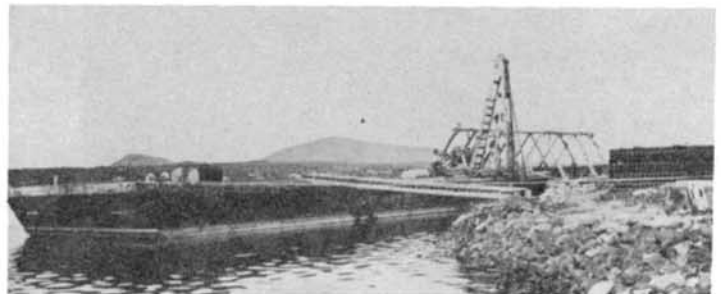


# Baja's First Railroad

THE PENINSULAR RAILROAD, 1891-1909  
AT SAN QUINTIN, BAJA CALIFORNIA



- L1 - Offices & residence at flour mill, San Quintin  
Courtesy Bill Cochran, Title Insurance & Trust Co.
- L2 - Peninsular R.R.#1 and train load of salvaged ties.  
Cour. Mrs. L.M.Hutchison, Title Insur. & Trust Co.
- L3 - Causeway, trestle, flour mill & warehouse. Note  
water pipe. 1897. (Courtesy Percy Hussong, Ensenada)
- R1 - Station & Peninsular RR No.1, San Quintin, 1897.  
(Courtesy Percy Hussong, Ensenada)
- R2 - Prior to tearing up of track at San Quintin, 11-08.  
(Courtesy Mrs. L. M. Hutchison, Tecate, Calif.)
- R3 - Laborers picking up ties on the inner peninsular  
at the borrow pit, 1909. (Courtesy Bill Cochran,  
Title Insurance & Trust Co., Union Title, San Diego)
- R4 - The 400-ton capacity lighter is ready to load rail  
at San Quintin, 1909. (Hutchison, Title Ins.& Trust)



### SPECIAL NOTES:

1. Photographs on this page are from the Southwest Rail-  
way Library, Dodge Collection. However, the photo-  
graphs were originally from the individuals or in-  
stitution credited.
2. Photographs on preceding page are from the collec-  
tion of the editor, Eric Sanders.