



# REPORT

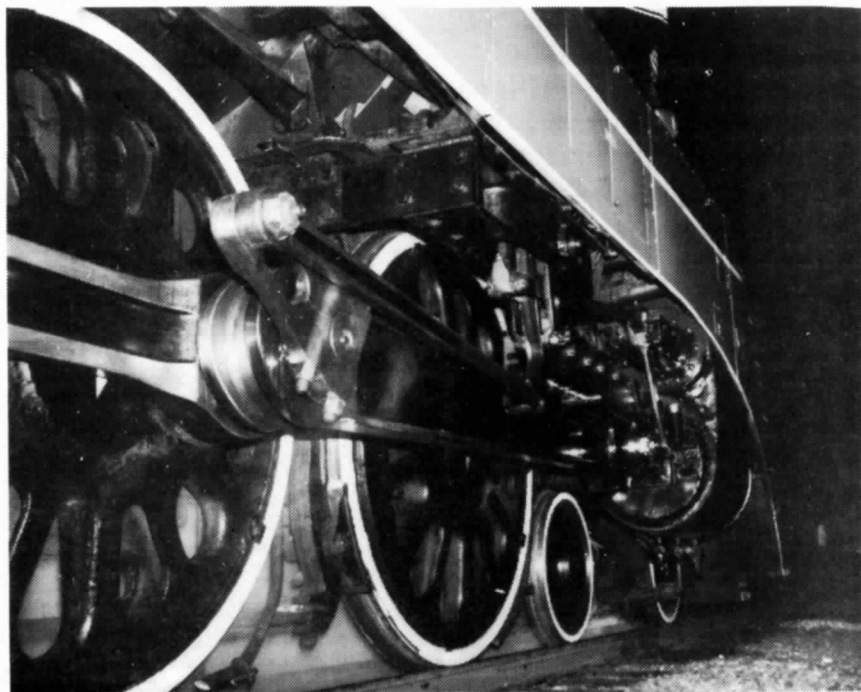
Official publication of the PACIFIC  
SOUTHWEST RAILWAY MUSEUM ASSOCIATION, Inc.

APRIL 1976

NUMBER 123



## FREEDOM TRAIN AND DOUBLE-HEADED STEAM IN THE SIERRAS TO HIGHLIGHT APRIL MEETING



R. DiGiorgio

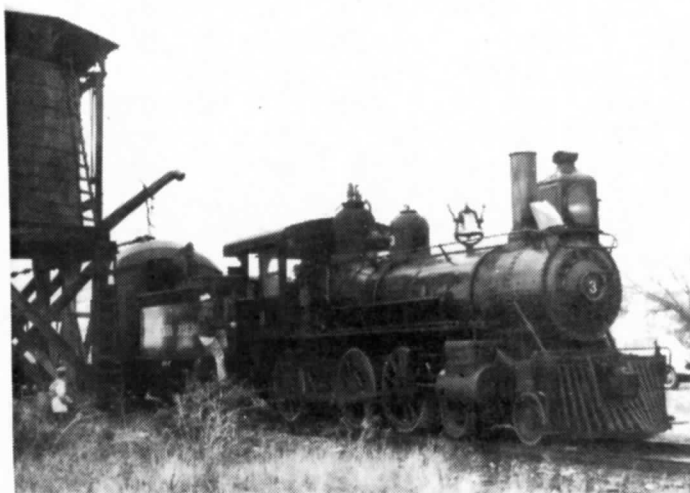
valve oil, Corky's coverage of Sierra Railroad's #28 and #34 double-heading a train through the tall grasses and oak trees of the Sierra Nevada foothills should take care of them once and for all. This program, originally scheduled for last October, is sure to appeal to a large segment of our membership. Invite your friends and neighbors to come along, and bring your children, too. Refreshments will be served.

### STORAGE NEEDED FOR ROHR DONATION

Although the County of San Diego has made arrangements to store the larger of the recently donated items from Rohr's Transportation Display Center, the smaller items are ensconced in a 10' X 20' mini-warehouse in Chula

On Friday, April 23rd at 7:30 p.m., PSRMA's second quarterly meeting of 1976 will get underway with important business, informative reports, and a blockbuster program designed to keep you on the edge of your seat.

Seeth L. "Corky" Thomson and his charming wife Barbra will present some of the best of their extensive collection of sound, color films of ex-S.P. Daylight #449 strutting her stuff at the head end of the American Freedom Train throughout the West. However, for those railbuffs with an insatiable craving for smoke, steam and hot



SIERRA No. 3, 1892 Rogers-built ten-wheeler, at Warnerville, Calif. July 13, 1957 (Dick Pennick).

Vista to the tune of \$48 per month. This is \$576 a year, which could go into more productive use if we had comparable free storage somewhere.

WE NEED SPACE NOW! If you have an unused garage or other safe, secure storage space that would be available on an indefinite basis, or if you would be willing to contribute to the cost of commercial storage, let Supt. Dick Pennick know (463-2276) as soon as possible. The second month's rent has already been paid and by the time you read this, another month will have been paid for. We are still attempting to get one of the commercial storage outfits to donate a space, but so far no luck. If you know anyone involved with any of the numerous storage warehouse firms, please let Dick know. A call in time may save \$400!

### "GOLDEN AGE OF RAILROADING" planned for April

Preparations are presently underway to move our plush railcar VICTORIA and the Coos Bay steam locomotive to the Bicentennial exhibit site on Harbor Drive, just north of Broadway.

It was decided at the last minust to substitute "VICKY" for the 1509, since restoration on the latter car would not be completed in time despite the valiant efforts of the volunteer crew. VICKY will be moved to the site about the first week of April, and will be opened to the public at that time. The steam engine will follow as soon as current restoration activity is complete, expected to be sometime in April. There has been a momentary hitch in the planned move of the steamer. It seems the Santa Fe Railway no longer is interested in moving old steam locomotives on their own wheels. Other railroads have instituted similar policies. Santa Fe has been approached for consideration in this matter, and staff is awaiting a decision.

A number of members are going to be needed throughout the year to host the exhibit. Two will normally be required each day the display is open (Saturdays, Sundays, and Holidays) especially during the peak tourist season, although one may suffice at other times of the year. VALUED MEMBERS, we really need your help on this one. The work will not be difficult and will require only that you be there to welcome the visitors, answer questions about the display and the Museum, solicit donations and memberships, hand out brochures, and assure that nothing is stolen. The published hours will be 10 a.m. - 4 p.m. although longer hours are possible depending on the flexibility of the staffers, especially during the long daylight days between April and October.

HERB KEHR (273-1074) is the man to call regarding staffing assignments. Information sheets, brochures, and all other necessary items and equipment will be provided.

Larry Rose is in the process of designing an illustrated handout, featuring photos and information on the display. It promises to be an attractive, well-done item, and will reflect favorably on the Museum. He will also design a large sign to advertise the exhibit. In addition, a new Museum brochure is in the works, probably patterned after an earlier brochure designed by member Robert DiGiorgio, at a time when throngs of San Diegans waited hours to ride in the cab of the Shay for a 300 foot ride under steam.

Please give Herb a call immediately and sign up for one or more hosting dates.

### MUSEUM HOSTS IN DEMAND IN '76

What with the Bicentennial exhibit, the Grossmont Center booth, the Southern California Exposition, the Miramar tours, and the Puerto Penasco excursion, the Museum will have an urgent and almost overwhelming need for volunteer hosts throughout the year. We do not expect the same handful of members, many of whom are already deeply involved with other Museum activities, to carry the entire ball, so we very much look forward to participation from the

rest of our 280-odd members. If everyone helps, no one is stuck with all the work. Everyday the Bicentennial exhibit is closed or the Fair booth unstaffed due to a lack of volunteers, uncounted numbers of potential members and Museum friends go undiscovered.

PSRMA, "America's Finest Railway Museum", is indeed an action-oriented group and the active support of its members is vital to maintaining the momentum in 1976 and beyond.

## Honor Roll



The Museum thanks the following members and friends whose generous contributions have furthered the goals of PSRMA during the month of March:

West Coast Window (Donated replacement glass for broken window in Victoria).

John Nichols (Contributed paint and supplies. Loaned generator and air compressor regularly. Built new doors for Coos Bay Loco. Donated \$5 to Ticket Dater Fund).

Norm Hill (Donated paint and supplies).

Charles Benbow (Donated \$20 to PSRMA).

### MORE HELP NEEDED FOR MIRAMAR TOURS

The group tours we provide at our Miramar Naval Air Station storage site are in desperate need of some assistance by more of our members.

In cooperation with Miramar's Public Affairs Office, PSRMA has opened up its rail display to organized groups for almost three years. Generally, the group contacts the Public Affairs Office to arrange a tour of the base, of which the railroad exhibit is a part, or sometimes a tour of the train only. The P.A. office then gets in touch with Linda DiGiorgio, PSRMA's Miramar tour coordinator giving her the date and time of the tour and the approximate number of persons in the group. Linda then must seek out interested Museum volunteers, generally only one, but sometimes two, to host the tour. The host generally opens up the equipment, guides the group through, provides information on the equipment and the Museum, and makes sure the group gets in and out of our rail cars and locomotives without mishap.

Necessary information is provided to each host so that, regardless of how little the prospective host may know about the display or the Museum, he or she is able to conduct a tour with some degree of authority. It's fun, educational, and a big helping hand to the Museum. If you would like to assist, call Herb Kehr, PSRMA Public Relations Director, at 273-1074 evenings.

Recent tours have included the Girl Scouts, 'Y' Indian Guides, adults from the County Mental Health Program, 5th graders from the Stella Maris Academy, and more recently, a contingent of the Southern California Model 'T' Club who showed up in their vintage autos and period costumes. These tours are not a hit-or-miss activity. They are well-organized and well-managed by Museum volunteers. But the job would be a great deal less work if more members or wives of members contributed a couple of hours a month to at least one tour. Herb anxiously awaits your call.

### CINCO DE MAYO FIESTA

We have been invited by the El Cajon Library to participate in their Cinco De Mayo Fiesta on Saturday, May 1st from 12 noon to 6 p.m.. They would like us to sell some type of Mexican Food in our booth. If possible, I would like to sell Enpanadas - which are small meat filled pies. Do you have a special recipe or an idea on what to sell?? Call me, Barbarann Parker, after three p.m. at 465-6387. We will also need people to set up

the booth, sell the food during the day, put the enpanadas together, and clean up afterwards. If you can help me in any of these areas, please call.

A variety of entertainment will be provided from 12:30 until 6 p.m., so it should be a fun-filled day and in turn give the Museum an excellent opportunity to not only earn some much needed "dinero" but also let more people know about PSRMA and its goals.

#### HOLCOMB VOTED HONORARY MEMBER

Charles Holcomb, a former active member of California Southern Railroad Museum in Riverside County, was recently voted an honorary contributing member by the PSRMA Board of Directors. Holcomb, a heavy-equipment mechanic, was cited for his work involved in the restoration and protection of our two old steamers stored at Perris. Charlie has offered whatever assistance he can provide when we get ready to put steam back in operation.

#### SOHO PLANS RAIL TRIP

The Save Our Heritage Organization's fifth annual train trip to Los Angeles will take place on Saturday, May 8. This year's trip will feature a visit to the J. Paul Getty Museum and its collections of Greek and Roman antiquities, Renaissance and Baroque paintings, and eighteenth century French decorative arts. The Museum itself is a reconstruction of a Roman seaside villa buried by the eruption of Mt. Vesuvius in 79 A.D.

Also planned is a walking tour of El Pueblo de Los Angeles State Historic Park (the downtown Plaza area) and stop to view the Victorian architecture of Carroll Avenue.

The trip is open to all, and will leave the Santa Fe Depot at 7:00 a.m. and return at 10:45 p.m. A chartered bus will meet the group in Los Angeles. Lunch will be at the San Antonio Winery, with a return to the Plaza area for dinner, which will be available in nearby Olvera Street, Chinatown, or Little Tokyo.

The Cost of the trip is \$20, which does not include lunch or dinner. Reservations are limited. For further information please call SOHO, 225-1033.

#### MUSEUM LAND DECISION EXPECTED SOON

President Kerr contacted the owner of the proposed Campo Museum site the other day in order to obtain a status report on progress so far in the negotiations. Chop reports that, although he was greeted cheerfully, the owners had not yet arrived at a decision regarding the Museum's proposal and would make no hint of what their decision might be. We can only hope that their decision will be forthcoming soon and that it will be favorable. It would be nice to be able to tell visitors to our Bicentennial exhibit and to our Fair booth that we actually have a museum! So far, we have only been in the warehouse business, storing equipment here and there, wherever we can find a temporary home.

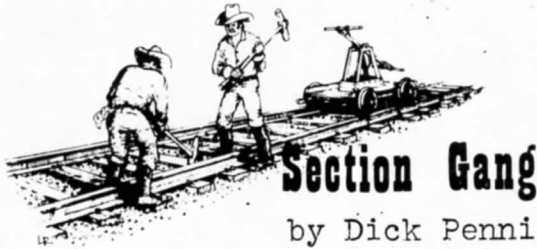
It is hoped that a tentative decision will be forthcoming prior to the April meeting so that an announcement can be made at that time.

#### MEMBER RECOVERING FROM ACCIDENT

Member John Nichols, a valued member of the Museum's restoration team, was recently involved in an auto accident which totally demolished his pick-up truck. Latest word is he is recovering nicely and hopes to be back in the thick of it soon. PSRMA says: "Get well soon, John."

SZKKB3YRIGSWZBCHDVGVSZIG

COOS BAY STEAMER: IT'S STANDING ROOM ONLY AT MIRAMAR



**Section Gang**

by Dick Pennick  
Superintendent

The almost phenomenal turnout of volunteers at the restoration sessions for our Coos Bay Timber (nee "Lumber") Co. 2-8-2T at Miramar NAS has both pleased and amazed Restoration Foreman Larry Rose and your Super. It is extremely gratifying, to say the least, to see busy bodies all over the old steamer, each doing his or her little piece of the whole.

In recent weeks, the smokebox front has been completely re-silvered and the number plate expertly detailed by Larry's deft hand; the cab, oil tank, and portions of the water tank have been painted or primed, and literally tons of dirt and crud have been scraped off the running gear. A steam cleaner was used with limited success, but a larger, more reliable unit is needed. Any free loans out there in membership land?

A big surprise and treat for all hands was the discovery of the orig-



Like ants on a candy bar, Museum members clamber over 2-8-2T No. 11 to begin restoration work. (Dick Pennick)

inal "Coos Bay Lumber Company" lettering under layers of black paint on the sides of the saddle tank. This lettering was originally applied by the shop forces at American Locomotive Co.'s Schenectady plant prior to delivery to the Powers, Oregon lumber hauler. This original lettering will be completely restored by Museum forces. Without a doubt, this has to be one of the more exciting restoration projects yet attempted. If you haven't



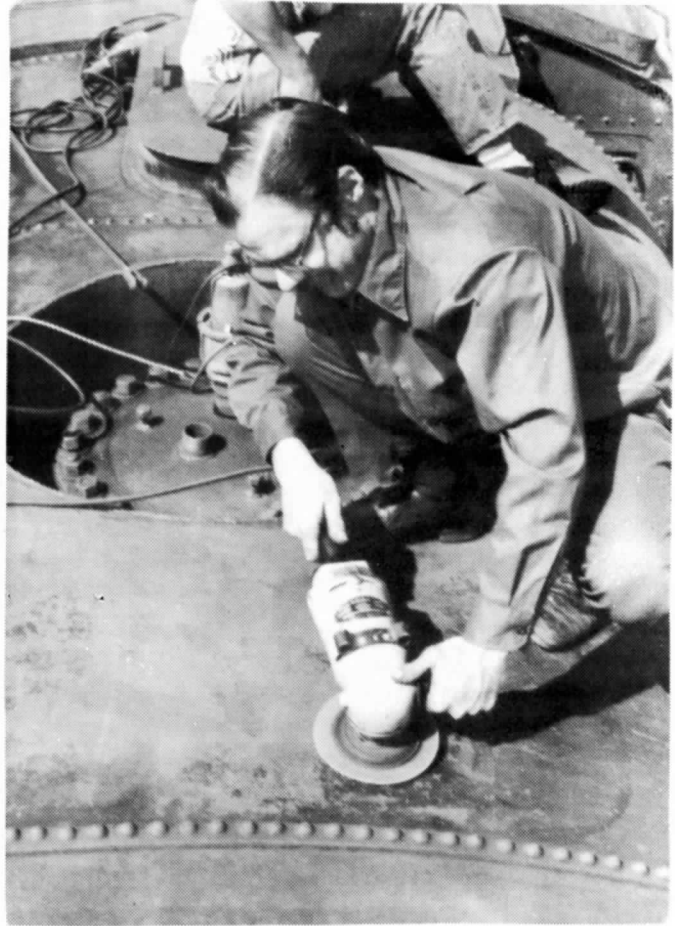
Gretchen Timmermans prepares number plate for painting (DP).

EDITOR: Dick Pennick, 9584 Upland St.,  
Spring Valley (463-2276)  
CIRCULATION: Ron Zeiss (277-8194)

REPORT is published monthly by the Pacific Southwest Railway Museum Assoc., Inc., P.O. Box 12096, San Diego, 92112. The Association is a chartered non-profit organization of persons, young and old, who share an interest in railroad operations, travel, and history. An IRS exemption certificate allows tax-deductible contributions to the Association. Association telephone: 280-1781

been out, come by, even if just to view the tremendous rebirth of a grand old dame of the rails. Sessions are held each Saturday from 9:30 a.m. to 4 p.m. Access to Miramar NAS is simple: just stop at the "VISITORS" gate at the I-15 entrance and tell them you are planning to work on the train display. Sometimes they ask for your auto registration, so be prepared with that also. You might also call Larry at 469-3064 prior to attending.

The helping hands in recent weeks have been: Ron Milot, Larry Rose, John Campbell, Dick Pennick, Warren Pennick, Norm Hill, Ken Helm, Jim Lundquist, Tom Nelson, Bob Nelson, Duan Dibble, John "Nick" Nichols, Jack Linn, and Ron Palhegyi. Nichols, incidentally, at 72 is the senior member of the restoration team, but he has the enthusiasm of a 20-year old. The crews have had a surprising array of power equipment at their disposal, all loaned by members. A hearty thanks to all who have volunteered their time and tools to date.



John Campbell takes power sander to rust on No. 11's tank. (DP)



"Nick" Nichols begins face-lifting on smokebox front.

#### NEW MASTER MECHANIC TAKES POST

Kenneth Helm, a relatively new member but already solidly established as a hard worker and an adept mechanic, has been appointed PSRMA's new Master Mechanic, replacing Bob DiGiorgio who has become less active in recent years due to the demands of church, family, and other interests.

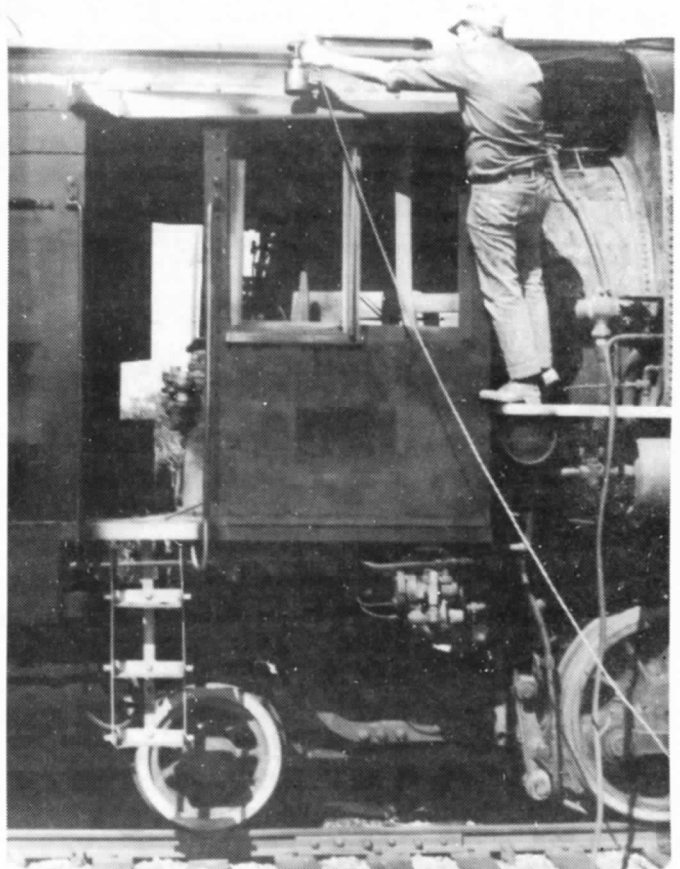
Ken, a Physics student at SDSU, will head the Museum's Mechanical Dept. and will work directly under the Superintendent maintaining Museum rolling stock and other mechanical facilities. All who have worked with Ken over the last year or so agree that he is the man for the job. Welcome aboard, Ken!

#### ROHR DISPLAYS TO MOVE SOON

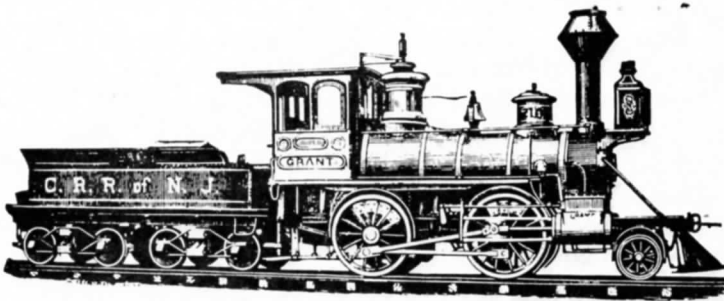
The larger items involved in the recent Rohr Industries donation still are waiting to be moved to a storage site at the County Maintenance Center on Campo Road east of Spring Valley. The items

remaining are the full-size Aerotrain mockup, the 1/4-size operating model of the Aerotrain, a full-size mockup of the Transbus, an example of the Monocab people mover, a full-size section of a BART car, and an actual LEM engine mounted on a display stand. The LEM was designed to power overhead monorail installations.

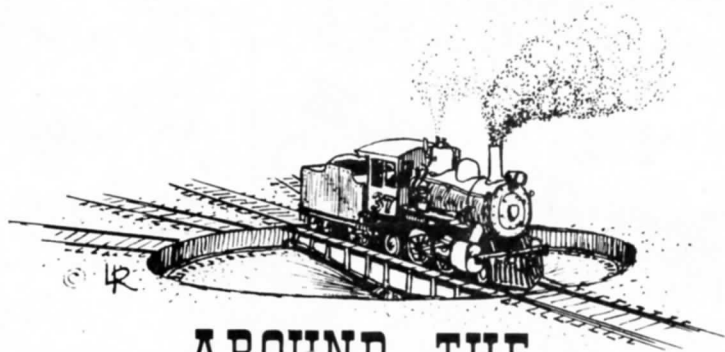
In March, a request was sent to Rohr Industries urging their assistance with the movement of these items to the storage site. As of this writing, no response has yet been received. Incidentally, for those who may have missed it, the San Diego Union ran an excellent report on the Rohr donation in its Feb. 28th edition.



Larry Rose sprays cab roof with black enamel. (DP)



Larry Rose puts finishing touches on number plate(DP)



## AROUND THE TURNTABLE

SD & AE: S.P. bay window caboose #4400 has temporarily replaced the regular crummy on the Roustabout while the latter is being shipped up north to repair a broken center sill. It is one of the old standard variety cabooses, with a cupola on top where it belongs! - - - Several old SD & AE water cars have been spotted in the yard and elsewhere around town.-----ATSF: The first two cars of "Project Choo-Choo", the tri-county railcommuter program between San Diego and L.A., arrived in the latter town recently

where they were to begin the 5:05 a.m. run from San Diego on April 26th. Due to a disagreement with the Santa Fe over the proposed time schedule for the commuter run, the program was delayed indefinitely and the cars are in storage in L.A. (S.D. Union) ---- The County Transportation Service Organization, formed by representatives of the three south coastal counties, including San Diego, met in Santa Ana on March 29th and approved the agreement needed to institute additional train service within the three counties. As opposed to the Los Angeles plan, CTSO will use existing Amtrak equipment on a once-a-day round trip leaving L.A. at 4:30 p.m. and leaving San Diego for the return at 8 p.m. Service is now scheduled to begin June 15th. (S.D. Union) ---- According to the Union on Feb. 4th, the San Diego-L.A. Amtrak service was one of 20 in the nation Amtrak suggested might be dropped if it were to operate within the \$378 million budget proposed for it by the administration in fiscal 1977. Amtrak contends the service loses \$1,249,000 a year. ---- RIP-TRACK: On Jan. 15th, Santa Fe surprised everyone when it sent long-stored 4-8-4 No. 2925 to their Cleburne, Texas shops to see what would be required to make it operational. Nothing official yet, however, from the R.R. (Iron Horse News) ---- Narrow-gauge reproduction of the famous Georgetown Loop in Colorado will commence operations in June. Full operation is not expected until 1980. ---- Cumbres & Toltec will operate June 12th thru October 10th. ---- 1876 3'-gauge 4-4-0 No. 84, originally the property of the Santa Cruz R.R. in Calif. and later the International Rys. of Central America in Guatemala (until 1958) and more recently a battered hulk in a Washington, D.C. park, has finally received its just due. On Feb. 17th, it was moved to the Smithsonian Institution for restoration. A photo of the beautiful engine can be found in G.M. Best's "Central American Holiday". Speaking of the I.R.C.A., although fully dieselized, several retired steamers were fired up for use during the recent earthquake problems. (IH News). ---- First excursion scheduled for U.P.'s 8444 this year is a Rocky Mountain RR Club special, Denver to Laramie, on May 30th, at \$30 adult and \$25 kids 11 and under from the club at P.O. Box 2391, Denver, 80201.

The FLORENCE & CRIPPLE CREEK RAILROAD		TRAIN SERVICE BETWEEN STATIONS.		TRAIN No. 1	TRAIN No. 7
TRAIN No. 10	TRAIN No. 8	STATIONS.	STATIONS.		
8.30 A		Lv. Cripple Ck. Ar.	Lv. Victor Ar.	5.00	7.25 A
		5.7 Lv. Victor Ar.	40.3 Ar. Florence Lv.	4.35	6.55 A
11		40.3 Ar. Florence Lv.		2.05	4.10 A
VIA D. & R. G.					
12.4	1.15 A	73.2 Ar. Pueblo Lv.		12.55 P	2.40 A
1.16	2.25 A	Lv. Pueblo Ar.		12.35	2.30 A
2.32	4.00 A	117.6 Lv. Colo. Spr'gs Ar.		11.25	12.57 A
3.30	5.10 A	140.5 Lv. Palmer Lake Ar.		10.39	12.00 P
5.00	7.00 A	192.8 Ar. Denver Lv.		8.45	10.00 P
No. 1	No. 9			No. 10	No. 2
2.11 P	6.45 P	Ar. Canon City Lv.		11.20 A	4.55 A

- April 6: Director's meeting (291-4787).
- April 10: Restoration session, Coos Bay 11.
- April 10: "Golden Age of Railroading" (hopefully).
- April 10: Copper Canyon No. 2 (to April 15)
- April 10: Virginia & Truckee revival, Virginia City, Nev.
- April 11: "Golden Age of Railroading".
- April 17: " " " " " "
- April 23: Quarterly General Meeting, House of Hospitality, 7:30 p.m. (291-4787).
- April 24: PSRMA "Get Acquainted" booth, Grossmont Shopping Center (10 a.m.-5 p.m.) 273-1074.

PSRMA REPORT  
 3906 Mt. Everest Blvd.  
 San Diego, CA 92111

Non-profit Org.  
 U.S. Postage  
 PAID  
 San Diego, CA  
 Permit No. 374

Return postage guaranteed.  
 Address correction requested.

