



REPORT

Official publication of the PACIFIC
SOUTHWEST RAILWAY MUSEUM ASSOCIATION, Inc.

JAN. 1976

NUMBER 120



Keep It Going in '76



1976! It seems like we no sooner get accustomed to writing "1975" than we must force our pen to write a "6" and not a "5". If your editor gets the correct year on the REPORT masthead above, he will feel lucky.

1976 is the widely-touted and commercialized 200th birthday of our country's founding. Many, many activities, special events, medals, dishware, tablecloths, and you-name-it will be dished out for public consumption during the year.

PSRMA, down here in our little corner of the world, plans to play a major role in local Bicentennial plans. Our "Golden Age of Railroading" exhibit will be open to the public on the Embarcadero near the foot of Broadway, across Harbor Drive from the renowned Star of India maritime exhibit. Thousands and thousands of people will view our display during the year, and the potential benefits of this mass public exposure of PSRMA could be fantastic!

The steam-powered American Freedom Train will visit San Diego in January, marking among other things the first time since 1953 that a steam locomotive has operated over San Diego's mainline rails under its own power (several years ago, PSRMA steamed up the Shay on occasion and operated it along a leased Santa Fe industrial spur at Harbor Drive and Crosby Street, but that doesn't count). PSRMA may be directly involved with the train's stay here, since the Freedom Train people are quite interested in the possibility of our group providing tours through the Museum's stored rail equipment at Miramar NAS during the train's 5-day visit. The 20-car train will be parked at the westerly end of the same track the Museum now occupies at Miramar.

1976, it appears, will very likely see the Museum obtain its long-awaited museum site in the County. This accomplishment will be regrettable only in the sense that our public museum was not already in operation by the time the Bicentennial rolled around. The tremendous influx of all those tourists and dollars sure would have been welcomed.

Membership is at an all-time high and increasing at an unprecedented rate. We have seen a growing number of our "Contributing" members upgrade to "Regular" (voting) status and we hope this trend continues indefinitely. In fact, we anticipate a much greater incidence of such conversions as the Museum increases its ability to provide worthwhile museum activity for its members.

All in all, 1976 gives definite signs of being a truly unforgettable year for PSRMA. Excursion activity will be up, Educational activities will

increase. Public exposure will be at an all-time high. You, as members, will be part of all the exciting things to come. Renew early and give a gift membership to a friend or relative. Help PSRMA continue to grow and prosper, not only in 1976, but in all of the years yet to come.

Happy New Year from the PSRMA staff!

ANNUAL DINNER Feb. 1st

PSRMA's big social gala, the Annual Dinner and installation of 1976 officers, is just around the corner. Make plans now to attend this very enjoyable activity. Another fine program is in store and the food should be superb. A flyer and coupon is attached to this issue of REPORT. Clip the coupon, attach your check, and mail to George Geyer by Dec. 26th. Can we look for to seeing you?

MUSEUM LAND SITE LOCMS NEARER

On December 16th, the Museum's directors approved an alternative proposal to be submitted to the owners of the planned operating museum site near Campo, 50 miles east of Third & Broadway, San Diego. This new proposal is in response to the original one submitted to PSRMA by the land's owners at the beginning of 1975, and incorporates decisions made at a meeting of the Land Committee on November 18th. By the time you read this, the proposal will be in the hands of the owners, and possibly by the next issue of REPORT a preliminary decision will be forthcoming. Watch for further developments.

LA MESA DEPOT UPDATE

Thanks to the several members who responded to our recent appeal for storage space for our old La Mesa railway station building. In December, contact was made with the realtor handling the sale of the property, and it was determined that the building is in no immediate danger of being evicted, a tremendous relief to the already overworked Museum staff.

If you happen to live in the La Mesa, El Cajon, Lakeside, or Santee area and would like to assume the task of overseeing the old station building until it is moved, please let Supt. Dick Pennick know at 463-2276. Duties would consist of securing the building against vandalism and other damage, maintaining public notices on the building, and in general checking it regularly to be sure no problems arise. Any needed supplies would be provided by the Museum.



Membership

News

by Herb Ruiz

As of Dec. 22nd, total Museum membership numbered 265, a 12% increase over last month.

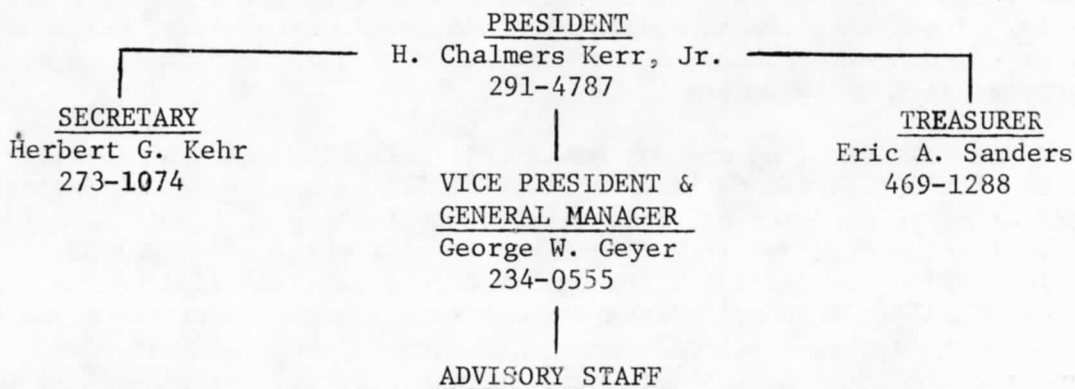
Editor's note: Due to space limitations, only the names and phone numbers of new members are shown. If you are a member and would like the address of any other member prior to the next official roster, contact Personnel Director Herb Ruiz at 463-3269,

or drop him a self-addressed, stamped envelope.

PACIFIC SOUTHWEST RAILWAY MUSEUM ASSOCIATION, Inc.

OFFICERS AND STAFF

1976



- GENERAL SUPERINTENDENT. Richard E. Pennick (463-2276)
- PUBLICATIONS DEPARTMENT. Richard E. Pennick
- PUBLIC RELATIONS DEPARTMENT Herbert G. Kehr
- SPECIAL ACTIVITIES DEPARTMENT. George W. Geyer
- RECORDS & PERSONNEL DEPARTMENT. Herbert J. Ruiz (463-3269)
- PURCHASING & STORES DEPARTMENT Steven C. Rosefeld (753-3656)
- FINANCE DEPARTMENT. Eric A. Sanders

BOARD OF DIRECTORS

- Chairman. Richard E. Pennick
- President H. Chalmers Kerr, Jr.
- Vice President. George W. Geyer
- Secretary Herbert G. Kehr
- Treasurer Eric A. Sanders
- Director Ronald L. Milot (298-8447)
- Director Larry L. Rose (469-3064)
- Advisory Staff Rep. Steven C. Rosefeld

REVIEW COMMITTEE

- W. Vernon Cook. (until Dec. 31, 1978)
- Ronald L. Milot (until Dec. 31, 1976)
- Raoul M. Morales. (until Dec. 31, 1977)
- Eric A. Sanders (Ch.) (until Dec. 31, 1978)
- John B. Stodelle (until Dec. 31, 1978)

SPECIAL COMMITTEES (chairmen)

- LAND H.C.Kerr, Jr.
- WAYS & MEANS H.C.Kerr, Jr.
- EXCURSION. E.A.Sanders
- BICENTENNIAL E.A.Sanders

Dear Member:

Welcome aboard, we're glad to have you with us for 1976.

Your museum association has plans for a fun and work filled year. Our primary objective of establishing a public operating museum of railroading and urban rail transit in San Diego County has a better than even chance of being realized in 1976. Negotiations are progressing toward obtaining a permanent museum site. Our success will be assured if each member becomes involved and dedicated to PSRMA's objectives. An involved member is a happy member.

One of the most exciting and worthwhile projects PSRMA will be involved with in 1976 will be "THE GOLDEN AGE OF RAILROADING EXHIBIT" as a part of the American Revolution Bicentennial Celebration. This exhibit, consisting of our ex-Coos Bay Timber Co. 2-8-2T locomotive No. 11 and ex-Santa Fe cafe-observation car No. 1509, will be on display along the east side of Harbor Drive, near the Star of India Maritime Museum. Historic displays inside the car will depict the exciting and robust history and heritage of railroading in San Diego and the Southwest. Both the car and locomotive are being restored by museum volunteers and the exhibit is planned to be opened to the public on or before 3 April 1976.

Entertaining and educational programs are planned for the three general membership meetings in April, July and October. These get-togethers offer a chance to socialize and meet with fellow members and friends. Several special activities are also on tap: the annual dinner in February; a mountain steam-up; a booth at the Southern California Exposition at Del Mar; a several day rail trip to Copper Canyon in Mexico during Easter vacation; and of course the wonderful Puerto Peñasco excursion. Other activities will be announced in the monthly newsletter REPORT.

However, 1976 will not be all play and no work! Work parties will be scheduled for: restoration and maintenance of our antique railway equipment; set-up and staffing of the Bicentennial exhibit; and hopefully the start of work on the museum facilities at PSRMA's permanent site.

Each and every member is encouraged to become involved in some aspect of PSRMA activity. Many and varied tasks await your attention and you alone know best where to contribute your time, talent, dollars and interest. The first step is easy: call me at 291-4787 evenings or weekends and say "How can I help?" The more members we have, the stronger PSRMA will become, so please publicize PSRMA to your friends and business acquaintances and suggest that they become members too.

For those who want to go where the administrative action is, you are invited to attend the Board of Directors meeting. The BOD usually meets the first Tuesday of each month at 7:30 P.M. in the Board Room of the San Diego Trust and Savings Bank Office Building at Sixth and Broadway in San Diego. PSRMA is your Association and the officers and staff solicit your help, ideas, views and concerns. If you can't attend the BOD meetings, please write or call me or one of the board members. Membership feedback is desired and encouraged.

1976 will be a great year for PSRMA. By working together, our objectives will be achieved soon.

Sincerely,

H. Chalmers Kerr, Jr.

H. Chalmers Kerr, Jr.
President

New Applications Received

Carl Ackerman 223-7777
 Walter W. Andert 466-2231
 Mr. Asa Brockman
 George C. Chamberlin 463-3682
 Thomas P. Cheesborough
 Willa Day 281-6321
 Frederick A. Einer, Jr.
 Robert Ellhmer (213)382-0413
 Mrs. William Foster 755-6050
 Norman Rae Hill 460-0350, 2-7-15
 John Hitchko
 Herbert H. Krauch 845-1753
 William E. Lalonde (213)634-5090
 C. J. McMahon 296-4961
 C. D. Nelson
 Bill Newland (503)942-7609, 2-7
 Dan Newman 727-2835, 2
 Leslie Newman
 Mrs. Edwin A. Reeve 724-7052
 Virginia Richmond 280-3023

Don Robertson 271-0345
 Mrs. H. E. Schnepf 479-7965
 Robert K. Scudder 724-6119
 2-4,6,7,9-11,14,15
 Jim Tatum 620-1151
 Mrs. Harvey W. Tennant 222-6637
 United States Toy Train Co. 755-8595
 John A. Vandewalle 298-7859
 Harry H. Weller (805)736-0991
 Mrs. William Whitney
 Harold E. Williams
 John X. Woodruff 280-1661

Address Changes

William O. Gibson
 4427 30th St.
 San Diego, CA 92116

 Jim Hollis
 8000 Fontana
 Prairie Village, Kansas 66208

IS OUR FACE RED!

The color may be appropriate for the holiday season, but the Museum's directors were nevertheless chagrined to discover they had inadvertently overlooked a paragraph in the Bylaws dealing with dues increases. Seems the members must ratify any such increase. So, very soon, each voting member will receive a ballot enabling him or her to pass judgement on the Museum's need for additional income.

FREEDOM TRAIN NOTES

In less than two weeks, that grand and noble endeavor, the American Freedom Train, will be steaming its way into the hearts and minds of San Diegans for a one-week stay beginning Jan. 14th, and, if the reaction of the crowds along the rest of the train's transcontinental route is any indication, the 80" - drivered ex-"Daylight" steam locomotive at the head-end will be the primary focus of interest. This author cannot agree more heartily after standing on the station platform at Bakersfield, Calif. in the early hours of a cold, overcast December 22nd, not ten feet from the tracks as this giant, puffing, beautiful thing thundered by in a cacophony of steam and steel. But more about this in next issue.

Despite the realization that all reminders of the past cannot be preserved for "posterity", it is nevertheless a crime that the Southern Pacific Railroad Corporate heirarchy saw fit to junk all but two of their once-magnificent 4-8-4 "GS" engines. The Freedom Train's 4449 is one. The other is 4460, which participated in the last official steam locomotive operation on the S.P., October 19, 1958. It was donated to the St. Louis' Museum of Transport the following year. It is a double tragedy that no California city or museum was graced with one of the engines that plied so many thousands of miles back and forth and up and down the length and breadth of the State. History is supposed to teach lessons. Isn't it time we heeded the maestro?

BOARD ADOPTS '76 EXCURSION PLAN

PSRMA's Directors, at their December 16th meeting, adopted the proposed general excursion schedule submitted by the hard-working Excursion Committee, chaired by Eric Sanders.

Planned for the year are two back-to-back train trips to Copper Canyon in Mexico, as well as the annual Puerto excursion in November. A train trip via Amtrak to L.A. with bus side-trip, and one or more one-day bus trips to destinations to be announced. Excursions are the Museum's primary means of financial support and will probably remain so for the foreseeable future. If you would like to assist in excursion planning and/or operation, call Eric at 469-1288. The more willing helpers we have, the easier the job becomes for each.

PHOTO CONTEST DERAILED

The hoped-for Freedom Train photo contest, mentioned in the November issue, was reluctantly scrubbed in December after conversations with the Freedom Train's operators. When it was discovered that all of the Train's movements in San Diego County, as well as in most of the Southland, would take place after dark, it was felt that a contest would place the advantage with photographers owning sophisticated flash equipment or having special knowledge of night-time photo techniques, or those who had the movility to journey to other areas of the State to catch the train in the daylight.

Museum staff hopes to sponsor a general-subject rail photo contest sometime this year, time permitting. Details will be available at the appropriate time.



Section Gang

by Dick Pennick, Sup't.

CAR 1509 UPDATE

The problem with the new roofing material applied to Car 1509 may be solved. The Marvin Co., manufacturers of the asphaltic coating, when apprised of the problem responded with a sample of another of their roofing compounds for us to try.

During the restoration session on Dec. 6th, the new material was tested by our restoration crew and the appearance was said to far surpass the earlier coating. It will be given a 2- or 3-week trial period to determine its weathering characteristics before more of the new coating is obtained. One of the nice features of it is that it can be placed over the earlier coating, or even over old roofing, as long as the surface is clean and dry.

1509 Restoration Captain Larry Rose reports turnout at the restoration sessions continues to be small, despite regular notices in REPORT. Originally, the practice was to call each of the members who had checked an interest in restoration or maintenance on their membership application. The calls were generally made just prior to each restoration session. The idea was that once a member showed up, he could see first hand what the program was and make up his own mind to participate on a regular basis. Once we went on the once-a-week restoration schedule, it became a considerable chore to make 2 or 3 dozen phone calls each week, especially when the effort generated only half a dozen people or less. Besides, we feel that if a member is genuinely interested in helping out, the member will do so. If not, he or she won't. And as long as we provide the "where" and "when" in REPORT, it should be up to the member from then on. If you are holding back because you are unsure how you can help, Larry will be more than happy to explain the tasks to you. His number is 469-3064.

COOS BAY STEAMER TO BE PAINTED

Shortly after the first of the year, probably in January, our ex-Coos Bay Timber Co. 2-8-2T will be sandblasted by Museum crews using our own sandblaster, and repainted for its Bicentennial stint this year with Car 1509. Donations are humbly solicited for the following needed items:

- . 20 gals. black engine enamel or equal.
- . 10 gals. zinc chromate primer.
- . 10 gals. paint thinner.
- . Air compressor rental or loan.
- . Truck load of silica sand.
- . Sufficient polycarbonate material to replace all window and headlight glass.
- . Steam cleaner rental or loan
- . Paint spray gun apparatus rental or loan, air or airless.

If you would be inclined to donate any of the listed supplies or the money to buy them, please give Supt. Dick Pennick a call (463-2276) as soon as possible. We already have a member who has offered to do the painting at no cost to the Museum. All we need is the paint.

FREEDOM TRAIN UPDATE

To any member or friend of PSRMA who waited in vain in Cajon Pass for the Freedom Train to come through on the "Cutoff" as reported in December REPORT, your editor humbly apologizes. S.P. decided to route the train through Soledad Canyon on the old line after all. Also, the local Bicentennial office did not get the train's schedule as had been hoped, so evidently will not until the train arrives in Anaheim. Some San Diegans are making plans to pace the train down the Coast from Anaheim when it leaves shortly after midnight on Wed., Jan. 14th for the run to San Diego. Should be a stirring sight, even at night. Your editor recalls pacing an occasional Santa Fe 3750-class steamer on this stretch while returning after dark from visits to the L.A. area in the early '50's. The orange flash from the firebox is still vivid in the memory.

The Museum was unable to obtain exhibit admission tickets for its members, since this is done by contract. Von's, Safeway, and all Sears Stores in San Diego County will be the exclusive outlets for the tickets locally, except for schools and military bases.

Quoting from PRS "Wheelclicks", just received: "Plans now call for a move from San Juan Capistrano to Yuma. This will be over the SP through San Geronio Pass, and at least the final part of this move should be by daylight. From Yuma to Phoenix and then to Tucson will be short night moves. The move to Albuquerque should be mostly by day, however. The train will be turned over to the Santa Fe at Denning if they will permit operation over this branch; if not, the train will be run into El Paso".

LATEST SCHEDULE

Long Beach	1/6 - 1/8	move	1/21
move	1/9	Yuma, Ariz.	1/22 - 1/23
Anaheim	6 pm 1/9 - 1/13	move	1/24
move	1/14	Phoenix (Tempe) 6pm	1/24 - 1/28
San Diego	2 pm 1/14 - 1/18	move	1/29
move	1/19	Tucson	1/30 - 2/1
San Juan	12 noon 1/19 - 1/20	move	2/2
Capistrano		Albuquerque	2/3 - 2/5

MUSEUM RECEIVES CARD

The Museum staff was very appreciative of the holiday greeting recently received from member Richard M. Shea in San Francisco. Mr. Shea has been part of the PSRMA team for some time and we can always count on his moral support. Thank you, Richard, for thinking of us during the recent holiday season.

TRADING POST

REPORT solicits buy, sell or trade items from PSRMA members. Rate: \$2 per ad of 50 words or less, 5 cents per word over 50. No charge for name, address or telephone number. Print or type your ad and send with check or money order to: Dick Pennick, editor, PSRMA Report, 9584 Upland St., Spring Valley, CA 92077, or phone 463-2276.

RAFFLE, DOOR PRIZES NEEDED

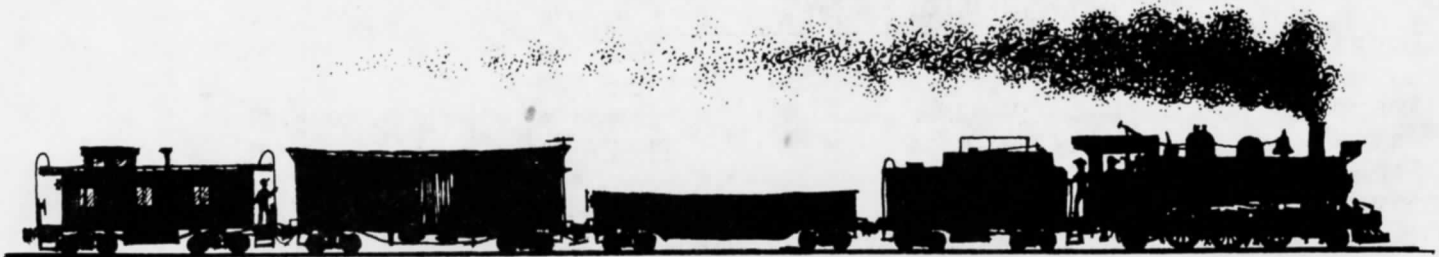
If you have a second-hand railroad book, paper items, railroad hardware, or anything else that would make an appropriate raffle or door prize at the Annual Dinner in February, contact George Geyer at 234-0555.

EDITOR'S WIFE JOINS STAFF

"If you can't fight 'em, join 'em" was the maxim used by Karen Pennick, REPORT editor Dick Pennick's better half, recently when she agreed to type the newsletter layouts each month. The typing is really the worst part of the whole job.

TRAIN No. 10		TRAIN No. 8		STATIONS		TRAIN No. 1		TRAIN No. 7	
8.30 A				Lv. Cripple Ck.	Ar.	5.00 P			7.25 A
				Lv. Victor	Ar.	4.35 P			6.55 A
11.15 A				Ar. Florence	Lv.	2.05 P			4.10 A
VIA D. & R. G.									
12.4 P	1.15 A	5.15 P		Ar. Pueblo	Lv.	12.55 P			2.40 A
	2.25 A	5.35 P		Lv. Colo. Sprgs.	Ar.	11.25 P			2.30 A
2.32 P	4.00 A	6.54 P		Lv. Palmer Lake	Ar.	10.39 P			12.57 A
3.30 P	5.10 A	7.54 P		Ar. Denver	Lv.	8.45 P			10.00 A
5.00 P	7.00 A	9.25 P		Ar. Canon City	Lv.	11.20 P			4.55 A
No. 1	No. 9	No. 10	No. 2						
2.11 P	6.45 A								

- Jan. 3: Restoration session, Car 1509, Marine Corps Recruit Depot, 9a.m.-4p.m. (469-3064)
- Jan. 6: Directors' meeting, SDT&S Bank, San Diego, 7:30 p.m. (291-4787)
- Jan. 10: Restoration session, Car 1509
- Jan. 14: Freedom Train arrives at Miramar Naval Air Station.
- Jan. 17: Restoration session, Car 1509
- Jan. 19: Freedom Train arrives San Juan Capistrano
- Jan. 24: Restoration session, Car 1509
- Jan. 31: Restoration session, Car 1509
- Feb. 1: PSRMA Annual dinner and installation of officers, Reuben E. Lee, Harbor Island
- Feb. 3: Directors' meeting, SDT&S Bank
- Feb. 7: Restoration session, Car 1509



GET IN THE P.S.R.M.A. HABIT !